

The Adult Directorate

Dr Rob Bale, Clinical Director

Meet the Senior Team



Overview of the Directorate

- 1 in 4 people suffer from a mental health problem.
- Directorate treats adults with a range of conditions from mild to moderate anxiety and depression to managing people with a severe and enduring mental illness.
- We also provide prison mental health and specialist care to people who have come into our services through the criminal justice system.
- We have a total budget of £22m for mental health provision in Buckinghamshire.
- Currently have approximately 4000 people open on our caseload across all our countywide services.

Adult Services

- 2 Adult Mental Health Teams (located in Aylesbury and High Wycombe with a satellite base in Amersham).
- Inpatient services are provided on our purpose built health and wellbeing campus in Aylesbury. 2 Adult Acute Inpatient Units (1 x 20 bedded female and 1 x 20 bedded male unit) and 1 Rehabilitation Ward (1 x 20 bedded mixed unit).
- Specialist services for patients with personality disorders, early onset psychosis or who need talking therapies to support their recovery.
- Team based at Stoke Mandeville Hospital to provide an in-reach service to patients presenting at A&E following an episode of deliberate self-harm.

Adult Services continued

- Services are jointly commissioned with Buckinghamshire County Council so the AMHTs are all fully integrated teams.
- We work to a locality model using outcomes based commissioning as our measurements of success.
- We work in close partnership with Buckinghamshire Healthcare Trust, 3rd Sector, GPs, Ambulance Services and Thames Valley Police.

Forensic Services

- 2 Forensic Community Mental Health Teams (located in Milton Keynes covering Milton Keynes and Buckinghamshire).
- 2 Forensic Medium Secure Inpatient Units (1 x 8 bedded unit and 1 x 20 bedded unit located in Milton Keynes).
- 1 Forensic Low Secure Inpatient Unit (1 x 20 bedded unit located in Aylesbury).
- Prison In-reach services are provided to HMP Grendon, HMP Springhill and Aylesbury YOI.

Forensic Services continued

- Specialist commissioners fund all forensic and mental health services.
- Joint working is undertaken with the Ministry of Justice and the Probation Service across both inpatient and community services.
- Oxford Health NHS FT is also the provider of secure services for Oxfordshire and Berkshire.

What Do We Want To Achieve

- Quality evidenced based care for patients and their carers.
- Easier access into all our services for patients.
- Transparent patient pathway with clearly defined treatments and outcomes.
- Integrated partnership working with all internal and external key stakeholders.
- Continued development of services that will improve the patient experience, eg: Street Triage Service

Older Adult Mental Health in Buckinghamshire

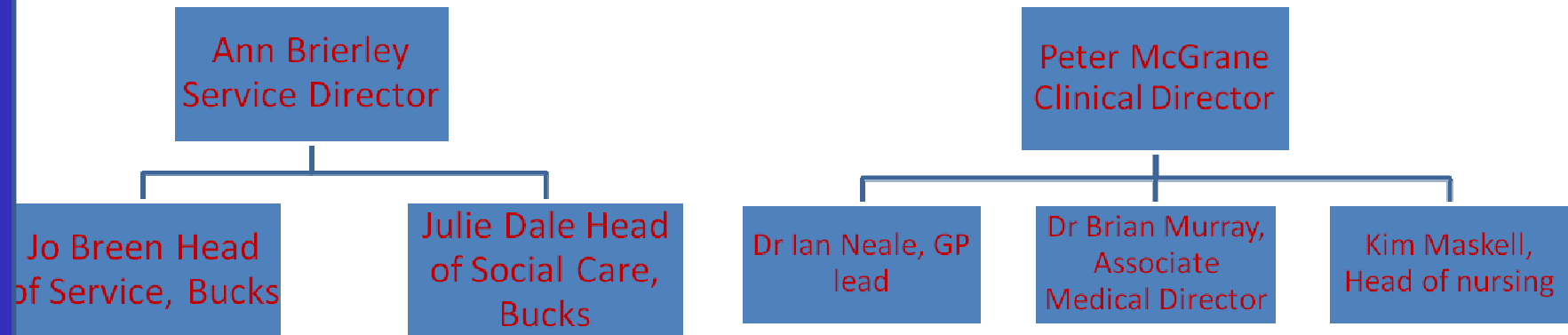
Jo Breen

Head of Service

Dr Brian Murray

*Consultant Older Adult Psychiatrist, Aylesbury
Associate Medical Director*

Senior Team, Older Adult Directorate



Overview

- Approximately 50% of our work is with dementia, 50 % 'other' mental illness
- Co-morbidity is common
- Total budget of £5.3 m for older adult mental health in Buckinghamshire.
- Approximately 2000 people open on our caseload across our countywide services
- Approximately 2000 patient contacts a month

CMHTs - location

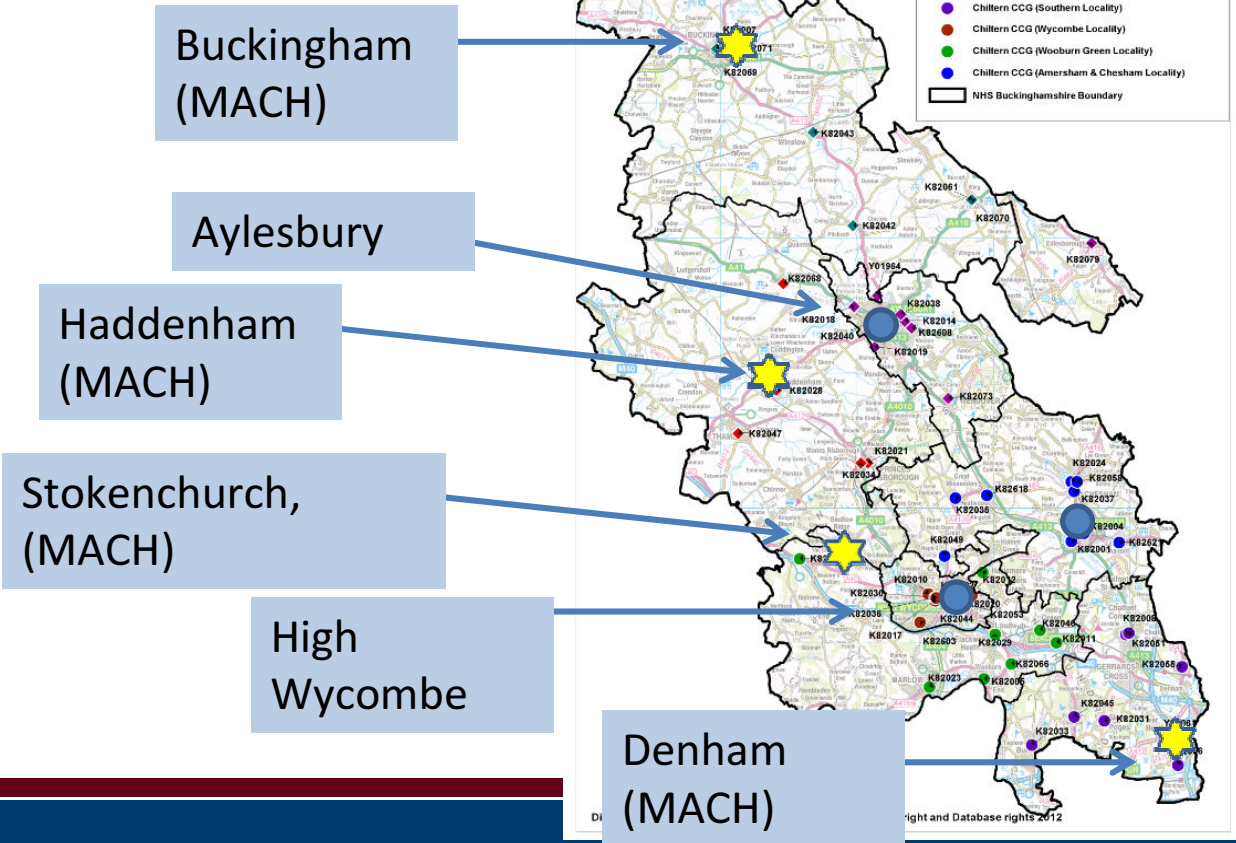
- North Buckinghamshire
 - Aylesbury, Whiteleaf Centre
 - Covers 35,388 people > 65 yrs
- South Buckinghamshire
 - Amersham, Haleacre
 - High Wycombe, Shrublands
 - Covers 60,776 people >65 yrs

Dementia diagnosis pathway

- Memory clinics
 - Aylesbury (3 clinics / week)
 - Amersham (3 clinics / week)
 - High Wycombe (2 clinics / week)
- MACH clinics
 - Funded by Dementia Challenge, CCG
 - Haddenham
 - Buckingham
 - Stokenchurch
 - Denham

Memory clinics

Map of GP Practices and Localities within NHS Buckinghamshire (April 2012)



In - patients

- Older Adults have one ward in Aylesbury, Whiteleaf
 - 20 beds
 - Mixed diagnosis
 - Mixed sex (male + female corridors)
 - Emphasis is on keeping patients at home

Integration

- 1 x CPN seconded to Quality in Care Home team
- 1.5 x CPN supporting dementia diagnosis in care homes
- CMHTs support MAGS (multiagency groups)
- High Wycombe CMHT supports MuDAS

Future

- AIMS accreditation for our ward
- MSNAP accreditation for our memory clinic services
- To use integration with key partners to provide better overall care for older adults in Buckinghamshire